

/// QUARTERLY BUSINESS SNAPSHOT

Business backdrop brightening

30 April 2024



Businesses move past turning point

Welcome to the latest quarterly business snapshot

The quarterly business snapshot uses the Group's proprietary data to provide you with a timely pulse on Australian businesses. Our report analyses the millions of daily transactions made by our business banking clients, unlocking a rich source of data on businesses nationwide.

The data reveals that while Australian businesses are still facing challenges, a broad-based gradual improvement in business cash flow conditions looks to be gaining traction. This suggests that while there remains a difficult and uncertain road ahead, the worst may be behind us.

Remnants from the pandemic in the form of supply bottlenecks, labour shortages and cost pressures are still proving a complication for Australian businesses despite significant improvements. The slowdown in aggregate demand has added another dimension, weakening the ability of businesses to pass on cost pressures into their own prices.

However, since the middle of 2023 falling expense outflows have outpaced slowing income flows. This means that cash flow conditions, measured by the income to expense ratio, have staged a gentle, but nonetheless encouraging, recovery.

The improvement in aggregate cash flows has coincided with a stabilisation in business credit growth at a solid level.

As would be expected, no two industries are the same and smaller businesses are feeling the pressure more than larger Commercial business. But these smaller enterprises are using their strong balance sheets as a back stop to help them navigate the rocky terrain.

Looking ahead, the consumer side of the economy is expected to start to heal throughout the second half of this year. Pressure on household incomes peaked in 2023 and stage 3 tax cuts from 1 July will further support the recovery in household budgets. More progress on inflation and the prospect of possible rate cuts from the Reserve Bank (RBA) late in the year could also help support consumers.

Taken together with the tentative improvement in business cash flow conditions, there are signs that businesses may have passed the nadir and that a recovery will gain further traction throughout 2024.





Cash flow insights: Cost control improvements

Cash flow conditions on the rise

Business income and expense cash flows both declined in the March quarter, continuing the trend underway since the middle of 2023. However, the fall in expenses continued to outpace the slowdown in income flows, driving an improvement in the income to expense ratio.

Both income and expenses have declined for three straight quarters, but just like in the December quarter, expenses have fallen at a faster rate than incomes as inflation cools, businesses optimise costs and weaker demand means firms are purchasing fewer inputs.

3-month change:

-1.4%
Income

-1.8%
Expenses

0.4%
Income-to-expense ratio

While still below pre-pandemic levels the income to expense ratio rose to its highest level since the December quarter of 2021.

In the last 12 months, business cash inflows have slipped 2.6% compared to a 4.2% fall in expense outflows over the same period.

This means that while cash flow conditions are still tighter than before the pandemic, the the worst may be behind us.

There is no indication that the recovery will accelerate materially from here and it is still likely to be a bumpy ride, but our customer data suggest that, in aggregate, things are heading in the right direction for businesses.

Chart 1: Business Cash Flow

Rolling 3-month Sum, Index March 2020 = 100

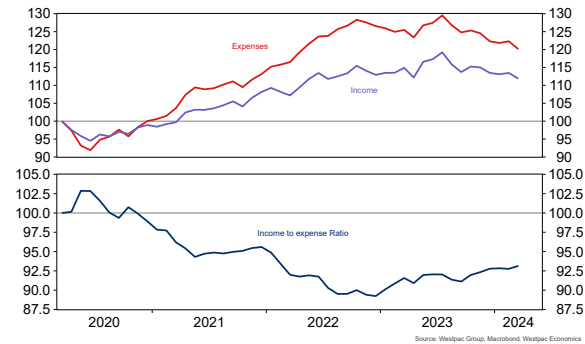
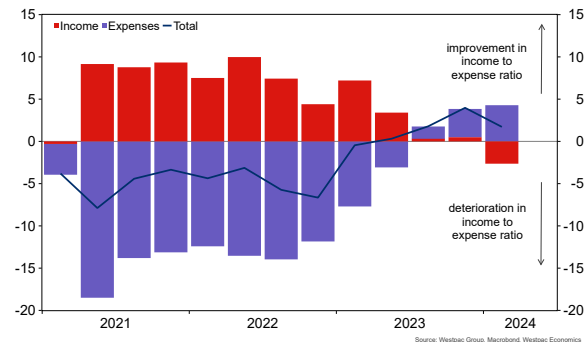


Chart 2: Income to Expense Ratio

Excluding Debt Servicing Payments, Contribution to Annual % Change



A lift in debt repayments

The improvement in the income to expense ratio over the past three quarters has been partially offset by an increase in cash payments towards servicing debt.

Payments on debt have increased by 13.3% over the year to the March quarter driven predominantly by larger Commercial businesses where credit growth has been strongest and debt levels are generally higher.

This increase in cash flows towards debt repayments likely reflects higher interest rates and solid credit growth over the period. Higher credit outstanding means businesses need to pay both more interest and more principal. Net of (rising) debt servicing payments, the recent recovery in the income to expense ratio has been a little more modest.

Debt servicing costs in aggregate are still below pre-pandemic levels, even when accounting for the recent uptick. The strong recapitalisation of business balance sheets that took place during the pandemic is still providing a tailwind to businesses.



Balance sheet insights: Aggregate balance sheets yet to budge

Smaller businesses feel the pinch

There is a growing divergence between the cash flow conditions of our SME and Commercial customers. Both cohorts of businesses are benefitting from a decline in expense outflows.

However, SMEs have experienced a much sharper slowdown in income flows. In the March quarter, SME cash inflows fell below pre-pandemic levels for the first time since lockdowns.

Divergent cash flow outcomes between businesses of different sizes are contributing to changes in business balance sheets as smaller firms lean into their savings buffers to help smooth the ride.

In aggregate, our measure of business liquidity remained steady in the March quarter at around 30% above pre-pandemic levels. But the underlying strength behind this number is highlighted by looking at the distribution of individual businesses.

Around 40% of all businesses have a liquidity ratio that's at least twice as strong as before the pandemic.

Continuing balance sheet strength is not just a legacy of the pandemic but is being supported by ongoing management of business cash stockpiles. Around 55% of businesses have deposit levels 25% larger than before the pandemic.

The drawdown of cash buffers among SMEs has left their cash levels below pre-pandemic levels, while Commercial businesses have maintained their extraordinarily strong cash buffers.

Calculating liquidity: Our liquidity measure assesses the stock of cash relative to businesses' financial liabilities.

Chart 3: Business Liquidity Ratio by Size
Stock of Savings Relative to Debt, Index Dec 2019 = 100

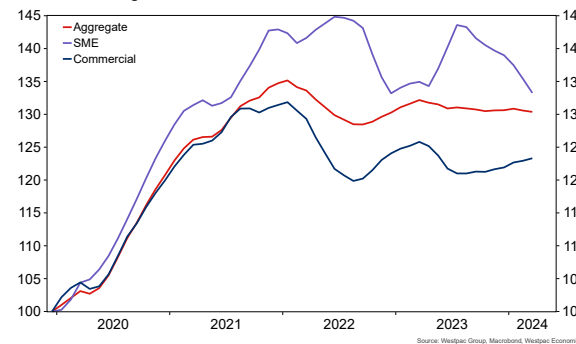
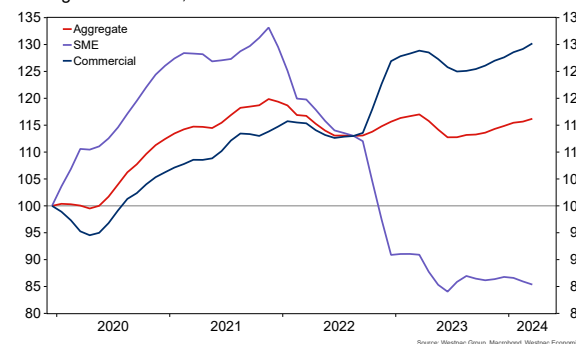


Chart 4: Business Cash Savings by Size
Rolling 3-month Sum, Index Dec 2019 = 100



Commercial businesses leaning into long-term debt

Our liquidity measure is still stronger for SMEs compared to their Commercial peers. However, the gap has recently closed. For SMEs, our liquidity measure has declined since the middle of last year, while the equivalent measure for Commercial businesses has tracked sideways.

There are two forces at play here. SMEs are drawing on their cash stockpiles to manage more challenging cash flow conditions. Commercial cash deposits are still slowly growing. Meanwhile, credit growth has been significantly stronger for Commercial businesses relative to their SME peers.

Reflecting the contrasting mindset between SME and Commercial businesses, term and equipment finance loans have increased substantially for Commercial customers, while use of working capital facilities has remained low.

SMEs have not had the same confidence to take on longer term debt to invest and grow.



Industry insights: Recovery broad-based across sectors

Overview of industry income to expense ratios

Incomes slipped in 10 of 14 industries in the March quarter. This compares to 12 industries in the December quarter. Weakness was centred on industries at the coal face of the consumer slowdown. This includes accommodation, cafés & restaurants and recreation services.

At the other end of the spectrum, personal services and property & property services sectors recorded an increase in cash inflows. The jump in personal services demand coincided with the resumption of the tertiary education semester, which likely saw an uptick in international student arrivals. The upswing in the residential property market may be supporting incomes for the property sector.

Over the past 12 months cash inflows were lower in all but two industries – education and personal services. This reflects the economic slowdown induced by the battle to slay inflation.

On the cost side, expense outflows are below their cycle peak in all 14 industries. However, progress has been stronger in some areas than others. Expense outflows have actually increased in education, agriculture and property & property services in both quarterly and annual terms.

The income to expense ratio was mixed across industries in the March quarter. Six of 14 industries saw an improvement in the quarter, spearheaded by personal and communication services. Education and property & property services bookended the laggards as weaker income flows and higher expenses weighed.

In the year to the March quarter, the income to expense ratio rose in 9 of 14 industries, mirroring the rebound in aggregate cash flow conditions since the middle of last year. However, no industry has an income to expense ratio above pre-pandemic levels, a sign that significant challenges remain for Australian businesses.

Chart 5: Income to Expense Ratio

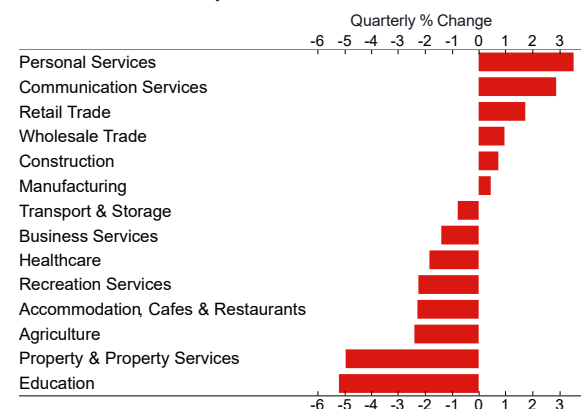
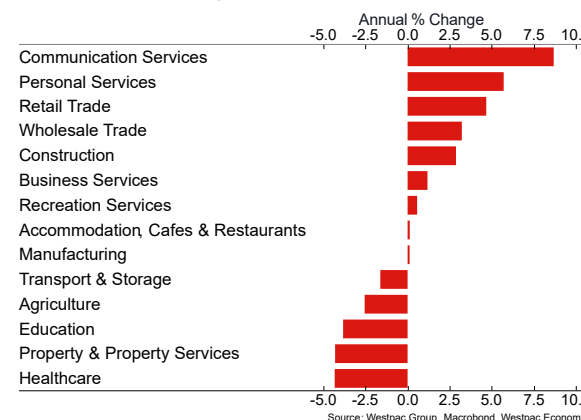


Chart 6: Income to Expense Ratio



Skipping out on the essentials

Healthcare and education generally outperform when faced with broader macroeconomic challenges due to their essential nature. They also benefit strongly from a growing population.

This outperformance was clear in our banking data through much of 2023. However, in the March quarter there were signs that these sectors are not fully immune to the broader macroeconomic pressures. Income flows slowed in the March quarter and these two industries saw less support from easing cost pressures. This was particularly the case for education, where expenses rose in the quarter. The data suggests that demand may be waning in these sectors, even with the benefit of strong population growth.

The deterioration in cash flow conditions for these essential industries may be a sign that households are starting to pull back on some essential spending to help offset cost of living pressures. There is likely a floor to the downside as there is a limit to how much households can pull back on essentials.



A look across the country: Most states join cash flow improvement

A fall in expenses economy-wide

Income flows were weaker across every major region apart from WA in the March quarter. SA/NT (-4.7%) experienced the sharpest quarterly slide, followed by VIC/TAS (-1.8%), NSW/ACT (-1.7%) and QLD (-0.7%). Cash inflows in WA rose 2.2% in the quarter, ending a string of two consecutive quarterly falls.

The fall in expenses experienced economy-wide was echoed across the country in the March quarter, although some jurisdictions experienced a sharper decline than others. At one end of the spectrum, businesses in VIC and TAS saw their cash outflows drop by 3.1% compared to a fall of just 0.2% in QLD.

The improvement in expenses outstripped slower income flows in WA and VIC/TAS, driving an improvement in cash flow (as measured by the income to expense ratio) in these regions. Cash flow conditions were broadly unchanged in NSW/ACT while cash inflows slowed more quickly than outflows in SA/NT and in QLD.

Zooming out over the past 12 months, WA has seen the strongest improvement in cash flow conditions. In fact, every major region apart from SA/NT recorded an improvement in the income to expense ratio over the past 12 months. Importantly, the deterioration in the income to expense ratio in SA/NT needs to be considered in the context of a generally more resilient starting point. Even after accounting for the recent deterioration in cash flow conditions in SA/NT, the region is still performing the second best relative to pre-pandemic levels, bettered only by WA.

Chart 7: Income to Expense Ratio by State
Excluding Debt Servicing Payments, March 2024, Quarterly % Change

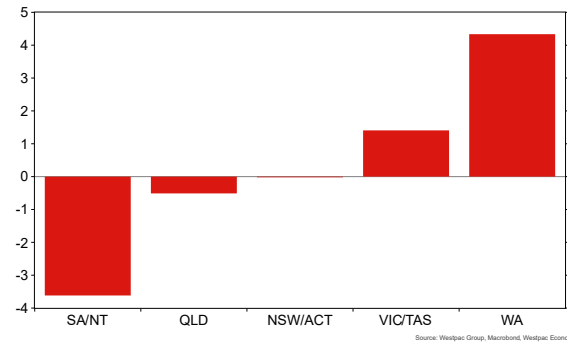


Chart 8: Income to Expense Ratio by State
Excluding Debt Servicing Payments, March 2024, Annual % Change

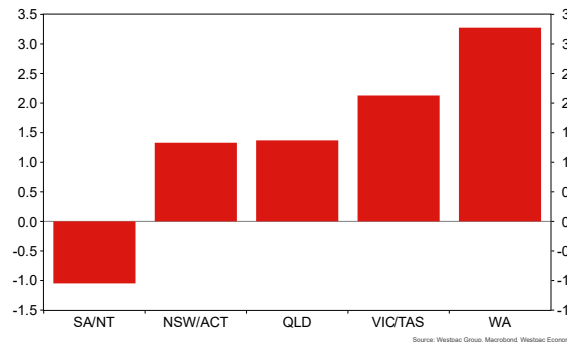


Chart 9: Business Income by State
Rolling 3-month Sum, Index March 2020 = 100

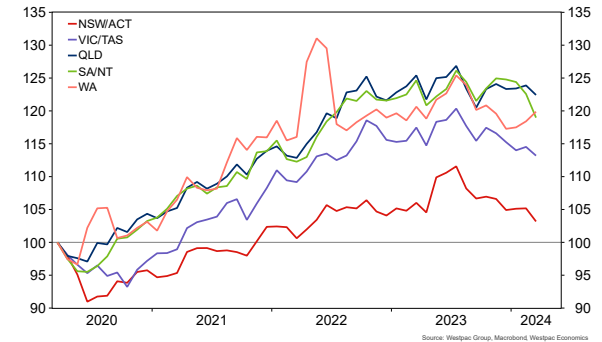
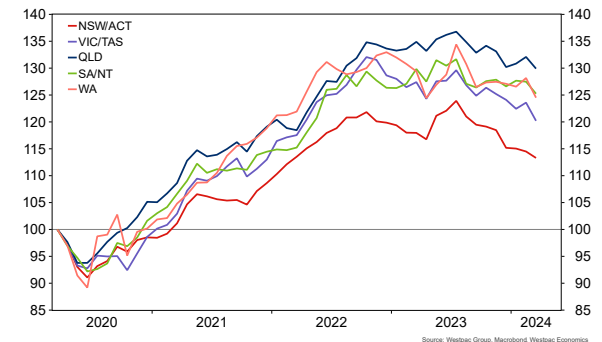


Chart 10: Business Expenses by State
Rolling 3-month Sum, Index March 2020 = 100



From encouraging signs to gradual recovery

Early signs of optimism are Building

The evidence from our business banking data has gradually evolved from businesses weathering the storm, to emerging signs that the storm is passing and that blue skies are emerging. There is always a risk that we are just in the eye of the storm and that we can expect further challenges ahead.

However, the encouraging trends in our business data and our expectation that some of the biggest macroeconomic headwinds will continue to subside over the course of 2024, gives us some quiet confidence that businesses can slowly start to unbatten the hatches.

Indeed, this already appears to be the attitude taken by many larger Commercial businesses who have seen the recent improvement in cash flow as a signal to borrow and invest in growth and productivity. As the recovery gains momentum this optimism is likely to trickle down to smaller firms, driving another leg of the expansion.

Crucially, we expect any recovery to be gradual. There remain countless headwinds to Australian businesses, global uncertainty is rife and many business surveys continue to point to

caution in the face of these uncertainties. But for businesses, cash is king, and our transactional data provides some good reason for optimism.

There are also several structural forces that stand to support well-placed and adaptable businesses. As the post-pandemic turbulence clears, businesses are freeing up the bandwidth to refocus and reinvest in productivity improvements and innovation. This includes through decarbonisation and the adoption of new technologies such as artificial intelligence.

Businesses have been a key pillar in the resilience of the Australian economy throughout the tumult of the last few years. Our data suggests that while challenges remain, armed with strong balance sheets this role can transition from a pillar of resilience to a driving force behind a recovery in economic growth.



Appendix 1: Major indicators by industry, annual % change

	Income				Expenses				Income to Expense Ratio			
	2024 YTD*	2023	2022	2021	2024 YTD*	2023	2022	2021	2024 YTD*	2023	2022	2021
By Industry												
Accommodation Cafes & Restaurants	-4.7	-1.9	12.7	10.4	-2.5	-5.7	30.7	10.2	-2.3	4.0	-13.8	0.3
Agriculture	0.9	4.7	-7.2	9.6	3.4	-0.3	3.2	13.5	-2.4	4.9	-10.1	-3.4
Business Services	-2.6	1.1	6.2	12.4	-1.3	-4.8	13.0	15.3	-1.4	6.2	-6.0	-2.5
Communication Services	0.1	-1.4	8.2	-1.6	-2.7	-9.0	8.2	9.8	2.9	8.4	0.0	-10.3
Recreation Services	-4.1	-2.9	-1.7	32.9	-1.9	-13.7	22.7	35.9	-2.2	12.6	-19.9	-2.2
Education	-3.7	12.8	8.4	6.2	1.6	11.1	13.3	10.0	-5.2	1.5	-4.3	-3.5
Healthcare	-2.4	5.1	5.8	5.2	-0.6	2.5	12.2	10.3	-1.8	2.5	-5.7	-4.6
Manufacturing	-3.6	1.2	5.1	7.1	-4.0	-1.8	10.4	7.9	0.4	3.0	-4.9	-0.8
Personal Services	4.3	0.6	9.4	8.3	0.7	2.8	16.9	8.6	3.5	-2.1	-6.4	-0.3
Retail Trade	-2.6	-2.4	6.6	0.2	-4.3	-5.7	11.2	4.7	1.7	3.5	-4.2	-4.4
Transport & Storage	-1.1	-1.3	18.9	11.8	-0.3	-3.6	23.7	21.6	-0.8	2.4	-3.8	-8.1
Wholesale Trade	-1.9	-5.2	-1.3	7.3	-2.8	-8.1	1.3	9.3	1.0	3.1	-2.5	-1.9
Construction	-2.7	3.7	12.9	8.3	-3.4	0.5	16.1	13.3	0.7	3.1	-2.8	-4.4
Property & Property Services	1.3	2.1	-0.7	12.2	6.6	-3.1	6.5	25.2	-5.0	5.4	-6.7	-10.4
By State												
NSW/ACT	-1.7	0.8	1.7	6.9	-1.6	-3.9	10.3	10.3	0.0	4.9	-7.8	-3.0
VIC/TAS	-1.8	-0.3	6.8	11.4	-3.1	-3.5	13.9	14.6	1.4	3.4	-6.2	-2.8
QLD	-0.7	1.4	6.7	9.2	-0.2	-2.6	12.2	13.3	-0.5	4.1	-4.9	-3.6
SA/NT	-4.7	2.6	6.8	10.3	-1.1	0.2	10.4	12.6	-3.6	2.4	-3.3	-2.1
WA	2.2	-1.4	2.6	12.5	-2.0	-4.4	11.9	18.6	4.3	3.1	-8.3	-5.2

*year to date percentage change



About the report

The quarterly business snapshot uses aggregated and de-identified data from our SME and Commercial business bank customers. Westpac Institutional Bank customers are not included in the scope of this report. This data provides a timely read on aggregate business conditions and the economic trends impacting small and medium businesses (including SME and Commercial businesses), providing our clients with insights to help them grow and prosper.

Turnover is derived by summing inflows paid to the accounts of the Group's business customers. Inflows related to transfers within business groups or capital transactions are excluded. Expense data is derived by summing outflows from the accounts of our business customers. Outflows related to transfers within business groups, capital transactions and outflows direct to any lending facility are excluded from the analysis. Debt servicing cost data is derived by summing the outflows from the accounts of our business customers for servicing any financing facilities or loans. It captures both interest and principal payments as applicable. Sample is adjusted where possible for changes in customer numbers. Therefore, the reported aggregates reflect the experience of the typical or average small and medium business in Australia, as opposed to changes in customer numbers. Due to data limitations, there are differences in sample groups between business cash flow data (i.e. income and expenses) and financial stock data (i.e. cash, debt, financial position). We have tried to control for these sample variations where possible.

Individual series are seasonally adjusted. All data is presented using rolling three month moving averages to smooth volatility related to the flows of income, expenses, debt servicing costs and financial stocks. Given the limited length of the time series available and volatile economic landscape over the past few years, seasonal factors are subject to change – however, different robustness methods are used to help ensure that any changes going forward are small.

www.westpaciq.com.au/economics

 Economics@westpac.com.au

Authors

Westpac Economics

Besa Deda

M: +61 404 844 817

E: besa.deda@westpac.com.au

Pat Bustamante

M: +61 434 856 909

E: pat.bustamante@westpac.com.au

Jarek Kowcza

M: +61 481 476 436

E: jarek.kowcza@westpac.com.au

Jameson Coombs

M: +61 401 102 789

E: jameson.coombs@westpac.com.au

Data Science and Innovation

Norman Yan

Service Owner

Credit Analytics Management, Business Lending

David Millar

Executive Manager

Georgiy Lytvynenko

Senior Manager

Long San Wong

Senior Manager



©2024 Westpac Banking Corporation ABN 33 007 457 141 (including where acting under any of its Westpac, St George, Bank of Melbourne or BankSA brands, collectively, “Westpac”). References to the “Westpac Group” are to Westpac and its subsidiaries and includes the directors, employees and representatives of Westpac and its subsidiaries.

Things you should know

We respect your privacy: [You can view our privacy statement at Westpac.com.au](#). Each time someone visits our site, data is captured so that we can accurately evaluate the quality of our content and make improvements for you. We may at times use technology to capture data about you to help us to better understand you and your needs, including potentially for the purposes of assessing your individual reading habits and interests to allow us to provide suggestions regarding other reading material which may be suitable for you.

This information, unless specifically indicated otherwise, is under copyright of the Westpac Group. None of the material, nor its contents, nor any copy of it, may be altered in any way, transmitted to, copied or distributed to any other party without the prior written permission of the Westpac Group.

Disclaimer

This information has been prepared by Westpac and is intended for information purposes only. It is not intended to reflect any recommendation or financial advice and investment decisions should not be based on it. This information does not constitute an offer, a solicitation of an offer, or an inducement to subscribe for, purchase or sell any financial instrument or to enter into a legally binding contract. To the extent that this information contains any general advice, it has been prepared without taking into account your objectives, financial situation or needs and before acting on it you should consider the appropriateness of the advice. Certain types of transactions, including those involving futures, options and high yield securities give rise to substantial risk and are not suitable for all investors. We recommend that you seek your own independent legal or financial advice before proceeding with any investment decision. This information may contain material provided by third parties. While such material is published with the necessary permission none of Westpac or its related entities accepts any responsibility for the accuracy or completeness of any such material. Although

we have made every effort to ensure this information is free from error, none of Westpac or its related entities warrants the accuracy, adequacy or completeness of this information, or otherwise endorses it in any way. Except where contrary to law, Westpac Group intend by this notice to exclude liability for this information. This information is subject to change without notice and none of Westpac or its related entities is under any obligation to update this information or correct any inaccuracy which may become apparent at a later date. This information may contain or incorporate by reference forward-looking statements. The words “believe”, “anticipate”, “expect”, “intend”, “plan”, “predict”, “continue”, “assume”, “positioned”, “may”, “will”, “should”, “shall”, “risk” and other similar expressions that are predictions of or indicate future events and future trends identify forward-looking statements. These forward-looking statements include all matters that are not historical facts. Past performance is not a reliable indicator of future performance, nor are forecasts of future performance. Whilst every effort has been taken to ensure that the assumptions on which any forecasts are based are reasonable, the forecasts may be affected by incorrect assumptions or by known or unknown risks and uncertainties. The ultimate outcomes may differ substantially from any forecasts.

Conflicts of Interest: In the normal course of offering banking products and services to its clients, the Westpac Group may act in several capacities (including issuer, market maker, underwriter, distributor, swap counterparty and calculation agent) simultaneously with respect to a financial instrument, giving rise to potential conflicts of interest which may impact the performance of a financial instrument. The Westpac Group may at any time transact or hold a position (including hedging and trading positions) for its own account or the account of a client in any financial instrument which may impact the performance of that financial instrument.

Author(s) disclaimer and declaration: The author(s) confirms that no part of his/her compensation was, is, or will be, directly or indirectly, related to any views or (if applicable) recommendations expressed in this material. The author(s) also confirms that this material accurately reflects his/her personal views about the financial products, companies or issuers (if applicable) and is based on sources reasonably believed to be reliable and accurate.

Further important information regarding sustainability-related content: This material may contain statements relating to environmental, social and governance (ESG)

topics. These are subject to known and unknown risks, and there are significant uncertainties, limitations, risks and assumptions in the metrics, modelling, data, scenarios, reporting and analysis on which the statements rely. In particular, these areas are rapidly evolving and maturing, and there are variations in approaches and common standards and practice, as well as uncertainty around future related policy and legislation. Some material may include information derived from publicly available sources that have not been independently verified. No representation or warranty is made as to the accuracy, completeness or reliability of the information. There is a risk that the analysis, estimates, judgements, assumptions, views, models, scenarios or projections used may turn out to be incorrect. These risks may cause actual outcomes to differ materially from those expressed or implied. The ESG-related statements in this material do not constitute advice, nor are they guarantees or predictions of future performance, and Westpac gives no representation, warranty or assurance (including as to the quality, accuracy or completeness of the statements). You should seek your own independent advice.

Additional country disclosures:

Australia: Westpac holds an Australian Financial Services Licence (No. 233714). You can access [Westpac’s Financial Services Guide here](#) or request a copy from your Westpac point of contact. To the extent that this information contains any general advice, it has been prepared without taking into account your objectives, financial situation or needs and before acting on it you should consider the appropriateness of the advice.

New Zealand: In New Zealand, products and services are provided by either Westpac (NZ division) or Westpac New Zealand Limited (company number 1763882), the New Zealand incorporated subsidiary of Westpac (“WNZL”). Any product or service made available by WNZL does not represent an offer from Westpac or any of its subsidiaries (other than WNZL). Neither Westpac nor its other subsidiaries guarantee or otherwise support the performance of WNZL in respect of any such product. WNZL is not an authorised deposit-taking institution for the purposes of Australian prudential standards. The current disclosure statements for the New Zealand branch of Westpac and WNZL can be obtained at the internet address www.westpac.co.nz.

Disclaimer continues overleaf ▶



Singapore: This material has been prepared and issued for distribution in Singapore to institutional investors, accredited investors and expert investors (as defined in the applicable Singapore laws and regulations) only. Recipients of this material in Singapore should contact Westpac Singapore Branch in respect of any matters arising from, or in connection with, this material. Westpac Singapore Branch holds a wholesale banking licence and is subject to supervision by the Monetary Authority of Singapore.

U.S.: Westpac operates in the United States of America as a federally licensed branch, regulated by the Office of the Comptroller of the Currency. Westpac is also registered with the US Commodity Futures Trading Commission (“CFTC”) as a Swap Dealer, but is neither registered as, or affiliated with, a Futures Commission Merchant registered with the US CFTC. The services and products referenced above are not insured by the Federal Deposit Insurance Corporation (“FDIC”). Westpac Capital Markets, LLC (“WCM”), a wholly-owned subsidiary of Westpac, is a broker-dealer registered under the U.S. Securities Exchange Act of 1934 (“the Exchange Act”) and member of the Financial Industry Regulatory Authority (“FINRA”). This communication is provided for distribution to U.S. institutional investors in reliance on the exemption from registration provided by Rule 15a-6 under the Exchange Act and is not subject to all of the independence and disclosure standards applicable to debt research reports prepared for retail investors in the United States. WCM is the U.S. distributor of this communication and accepts responsibility for the contents of this communication. Transactions by U.S. customers of any securities referenced herein should be effected through WCM. All disclaimers set out with respect to Westpac apply equally to WCM. If you would like to speak to someone regarding any security mentioned herein, please contact WCM on +1 212 389 1269. Investing in any non-U.S. securities or related financial instruments mentioned in this communication may present certain risks. The securities of non-U.S. issuers may not be registered with, or be subject to the regulations of, the SEC in the United States. Information on such non-U.S. securities or related financial instruments may be limited. Non-U.S. companies may not be subject to audit and reporting standards and regulatory requirements comparable to those in effect in the United States. The value of any investment or income from any securities or related derivative instruments denominated in a currency other than U.S. dollars is subject to exchange rate fluctuations that may have a positive or adverse effect on the value of or income from such securities or related derivative instruments.

The author of this communication is employed by Westpac and is not registered or qualified as a research analyst, representative, or associated person of WCM or any other U.S. broker-dealer under the rules of FINRA, any other U.S. self-regulatory organisation, or the laws, rules or regulations of any State. Unless otherwise specifically stated, the views expressed herein are solely those of the author and may differ from the information, views or analysis expressed by Westpac and/or its affiliates.

UK and EU: The London branch of Westpac is authorised in the United Kingdom by the Prudential Regulation Authority (PRA) and is subject to regulation by the Financial Conduct Authority (FCA) and limited regulation by the PRA (Financial Services Register number: 124586). The London branch of Westpac is registered at Companies House as a branch established in the United Kingdom (Branch No. BR000106). Details about the extent of the regulation of Westpac’s London branch by the PRA are available from us on request.

Westpac Europe GmbH (“WEG”) is authorised in Germany by the Federal Financial Supervision Authority (“BaFin”) and subject to its regulation. WEG’s supervisory authorities are BaFin and the German Federal Bank (“Deutsche Bundesbank”). WEG is registered with the commercial register (“Handelsregister”) of the local court of Frankfurt am Main under registration number HRB 118483. In accordance with APRA’s Prudential Standard 222 ‘Association with Related Entities’, Westpac does not stand behind WEG other than as provided for in certain legal agreements (a risk transfer, sub-participation and collateral agreement) between Westpac and WEG and obligations of WEG do not represent liabilities of Westpac.

This communication is not intended for distribution to, or use by any person or entity in any jurisdiction or country where such distribution or use would be contrary to local law or regulation. This communication is not being made to or distributed to, and must not be passed on to, the general public in the United Kingdom. Rather, this communication is being made only to and is directed at (a) those persons falling within the definition of Investment Professionals (set out in Article 19(5) of the Financial Services and Markets Act 2000 (Financial Promotion) Order 2005 (the “Order”)); (b) those persons falling within the definition of high net worth companies, unincorporated associations etc. (set out in Article 49(2) of the Order); (c) other persons to whom it may lawfully be communicated in accordance with the Order or (d) any persons to whom it may otherwise lawfully be made (all such persons together being referred to as

“relevant persons”). Any person who is not a relevant person should not act or rely on this communication or any of its contents. In the same way, the information contained in this communication is intended for “eligible counterparties” and “professional clients” as defined by the rules of the Financial Conduct Authority and is not intended for “retail clients”. Westpac expressly prohibits you from passing on the information in this communication to any third party.

This communication contains general commentary, research, and market colour. The communication does not constitute investment advice. The material may contain an ‘investment recommendation’ and/or ‘information recommending or suggesting an investment’, both as defined in Regulation (EU) No 596/2014 (including as applicable in the United Kingdom) (“MAR”). In accordance with the relevant provisions of MAR, reasonable care has been taken to ensure that the material has been objectively presented and that interests or conflicts of interest of the sender concerning the financial instruments to which that information relates have been disclosed.

Investment recommendations must be read alongside the specific disclosure which accompanies them and the general disclosure which can be found [here](#). Such disclosure fulfils certain additional information requirements of MAR and associated delegated legislation and by accepting this communication you acknowledge that you are aware of the existence of such additional disclosure and its contents.

To the extent this communication comprises an investment recommendation it is classified as non-independent research. It has not been prepared in accordance with legal requirements designed to promote the independence of investment research and therefore constitutes a marketing communication. Further, this communication is not subject to any prohibition on dealing ahead of the dissemination of investment research.